

# Tank beam load cell



- **Capacities from 1,000 lb to 75,000 lb**
- **50 ft 4 wire cable**
- **Nickel plated construction**
- **Interchangeable with Sensortronics 65016**
- **For use with tank scales**
- **Available with optional mounting assembly**



## Scales & Components

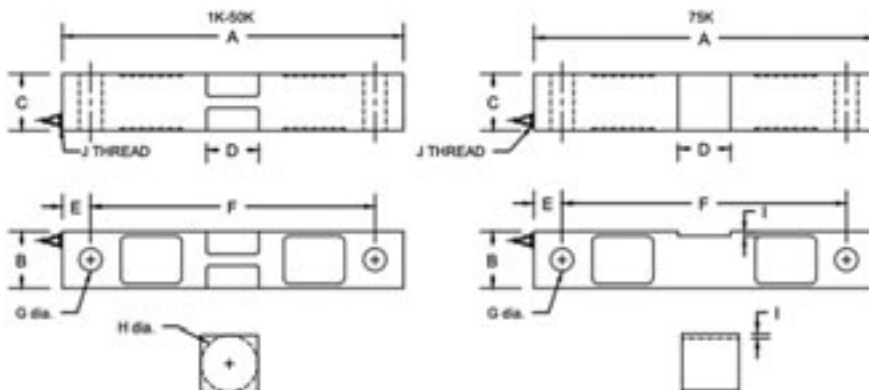
**email: [sales@totalcomp.com](mailto:sales@totalcomp.com)**

# Specifications

# TDE16

The Totalcomp TDE16 load cells are interchangeable with Sensortronics 65016 double ended beam load cells. They are built to meet or exceed all manufacturers specs for this type of cell. They are constructed of nickel plated steel for washability and protection from harsh environments.

Part Number	Capacity	Weight	Stock
TDE16-1K	1,000 lb	4 lb	2359
TDE16-1.5K	1,500 lb	4 lb	2360
TDE16-2K	2,000 lb	4 lb	2361
TDE16-2.50K	2,500 lb	4 lb	2362
TDE16-5K	5,000 lb	4 lb	2364
TDE16-10K	10,000 lb	8 lb	2365
TDE16-15K	15,000 lb	8 lb	2366
TDE16-20K	20,000 lb	8 lb	2367
TDE16-25K	25,000 lb	8 lb	2368
TDE16-35K	35,000 lb	16 lb	4183
TDE16-50K	50,000 lb	25 lb	2369
TDE16-75K	75,000 lb	25 lb	2806



RATED CAPACITY	DIMENSIONS									
	A	B	C	D	E	F	G	H	I	J
1K-5K	7.50	1.25	1.25	1.15	0.62	6.25	0.50	1.25	-	1/4-18 NPT
10K-25K	8.75	1.54	1.44	2.00	0.62	7.50	0.81	2.00	-	1/4-18 NPT
35K	8.75	2.50	1.50	2.00	0.62	7.50	0.81	2.50	-	1/2-14 NPT
50K	13.50	2.54	2.44	3.25	1.00	11.50	1.31	3.00	-	1/2-14 NPT
75K	13.50	2.54	2.44	3.25	1.00	11.50	1.31	-	0.17	1/2-14 NPT
100K-125K	18.50	3.04	2.94	3.25	1.15	15.50	1.61	-	0.25	1/2-14 NPT

## Performance

Full Scale Output	3.00 mv/v
Combined error	0.02% FS
Nonlinearity	0.03% FS
Hysteresis	0.02% FS
Creep in 30 min	0.02% FS
Non-Repeatability	0.01% FS
Zero Balance	1.0% FS
Overload, Safe	150% FS
Overload, Ultimate	300% FS

## Electrical

Bridge Resistance	
Input	700 +/- 10 ohms
Output	700 +/- 5 ohms
Excitation Voltage	10VDC(20VDC Max)
Insulation Resistance	5000Mohms@50VDC

## Wiring

50 foot, 4 wire

## Temperature

Compensated Range	-10 deg C to +40 deg C
Operating Range	-20 deg C to +60 deg C
Effect on Zero Balance	0.0027% FS/ deg F
Effect on FS Output	0.0015 FS/ deg F

## Mechanical

Material	Alloy tool steel
Finish	Nickel plated
Sealing	IP67

## Color code

+Excitation	Green
-Excitation	Black
+Output	White
-Output	Red

### Totalcomp Limited Warranty

Totalcomp warrants this product to be free of defects in materials and/or workmanship and suitable for the purpose intended as outlined in this sheet. This warranty is effective and shall cover the purchaser for one year from the date of shipment from our plant. If this product is found to be defective by our inspection in accordance with the above listed criteria, we will replace or repair it at our expense. For warranty service, please obtain a return authorization number from us and return the item, shipping prepaid, with a written description of the problem. We will respond promptly with the results of our evaluation.



**Totalcomp** Scales & Components

13-01 Pollitt Drive Ext, Fair Lawn NJ 07410

Phone 201-797-2718 Fax 201-797-2287

email: [sales@totalcomp.com](mailto:sales@totalcomp.com)